


AUTOMOTIVE BLADE FUSE CLIP & HOLDERS

Underwriters Laboratories, Inc.
Recognized Component Program —
 **UL File Number E354010**

UL file number E354010 has been assigned to Keystone Electronics' automotive fuse clip and holders. (Refer to pages 40-43) Indicating recognition by Underwriters Laboratories Inc. that they are in compliance with their component program.

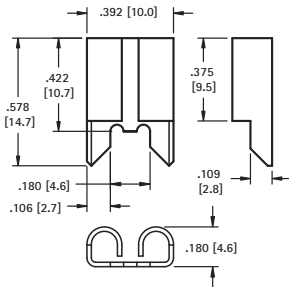
- Clips and holders available for Mini, standard, low profile & Maxi Auto fuses
- Horizontal and vertical fuse clips and holder options
- Holds fuse securely, even after multiple insertions
- THM components maintain position during wave soldering
- SMT components available packed on tape and reel for automated assembly

"MAXI" AUTOMOTIVE FUSE CLIP & HOLDER

FOR .312 (7.9) × .032 (.80) MAXI BLADE FUSES

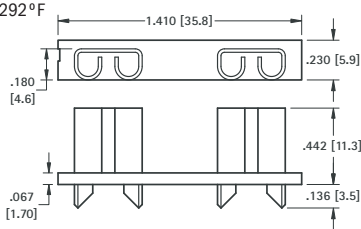
For Littelfuse Maxi 297 series/Bussmann Max series or equivalent

- Thru hole PC mountable, maintains position during wave soldering
- Holder design prevents solder wicking
- Withstands the rigors of shock and vibration
- Holds fuse securely, even after multiple insertions

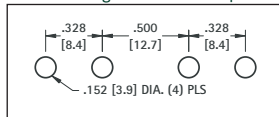


SPECIFICATIONS

Contacts: .020 (.51) Copper, Tin-Nickel Plate
Insulator: Glass filled Nylon, UL Rated 94V-0
UL Current Rating: 50 Amps @ 500V AC
UL Temperature Rating: -58°F to +292°F (-50°C to +145°C)



Mounting Detail For Two Clips



CAT. NO. 3555

CAT. NO. 3555-2

MODULAR AUTOMOTIVE BLADE FUSE HOLDERS

FOR .205 (5.2) × .025 (.64) STANDARD BLADE FUSES

For Littelfuse ATOF 257 series/Bussmann ATC series or equivalent

SPECIFICATIONS

Contacts: Brass, Tin Plate
Body: Nylon
Current Rating: 30 Amps @ 500V AC (Non-UL Rated)
Temperature Rating: -58°F to +292°F (-50°C to +145°C)

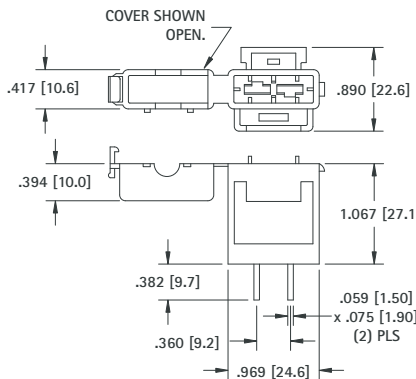
- Designed for standard auto blade fuses
- Fully insulated compact design
- Mounts easily in pre-drilled or punched hole
- Holder has pocket to hold spare fuse
- Safety lever release clip will not open under shock or vibration
- Fuses are installed and removed easily
- May be used individually or easily interlocked for multiple mounting



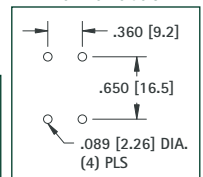
3560 (Shown with two 3560 holders, interlocked)



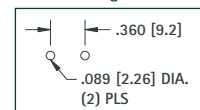
3559 (14 gauge wire lead must be cut and spliced for in-line use)



Mounting Detail For Two Holders



Mounting Detail



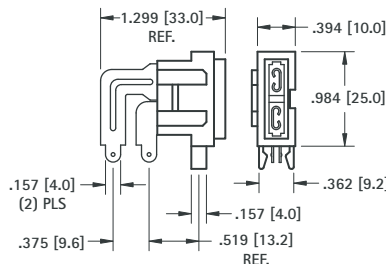
CAT. NO. 3560 (PC Mount)*

CAT. NO. 3559 (In Line)*

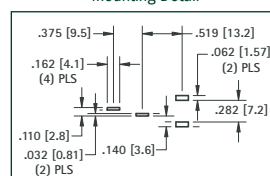
SPECIFICATIONS

Contacts: Brass, Tin Plate
Body: Nylon
Current Rating: 30 Amps @ 500V AC (Non-UL Rated)
Temperature Rating: -58°F to +292°F (-50°C to +145°C)

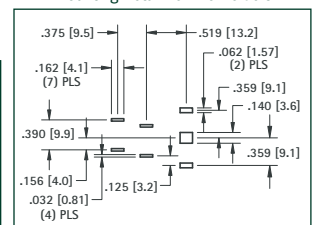
- Fully insulated fuse mount
- Designed for standard auto blade fuses
- Mounts easily in punched hole
- Fuses are installed and removed easily
- May be used individually or easily interlocked for multiple mounting



Mounting Detail



Mounting Detail For Two Holders



CAT. NO. 3558*

*Modular Fuse Holders are not UL recognized

"AUTO" FUSE CLIPS & HOLDERS