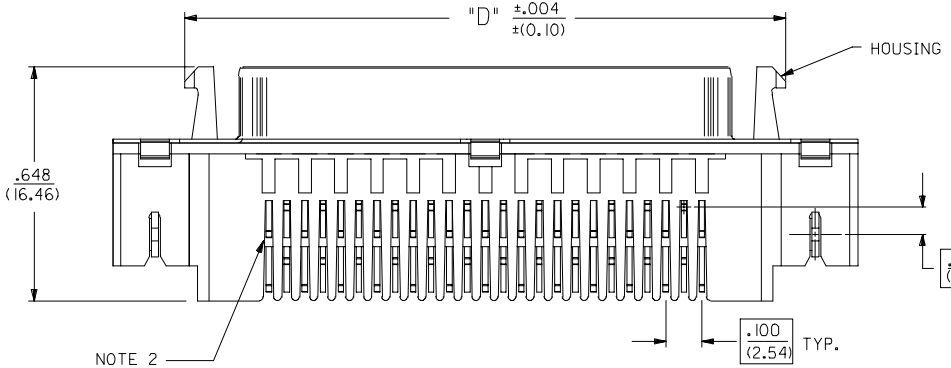
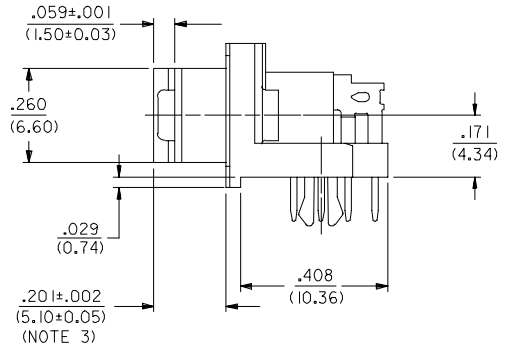
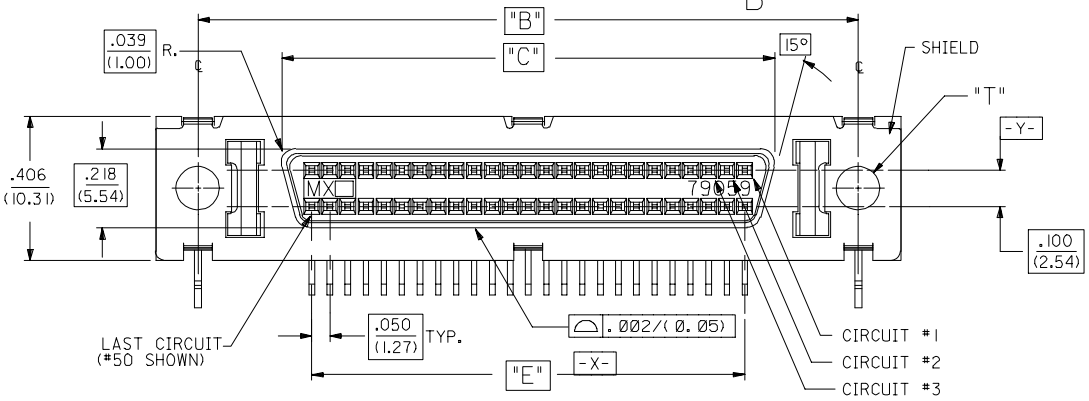
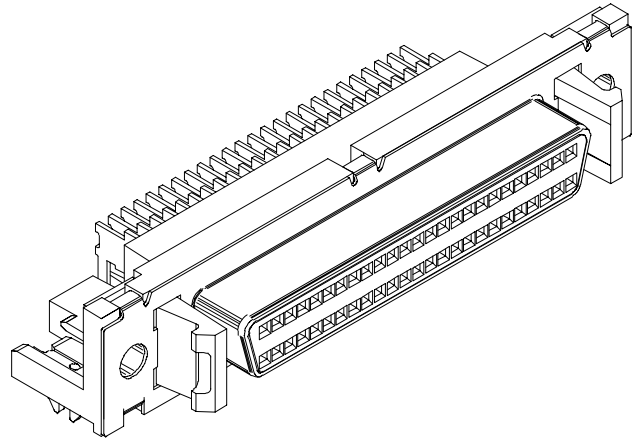
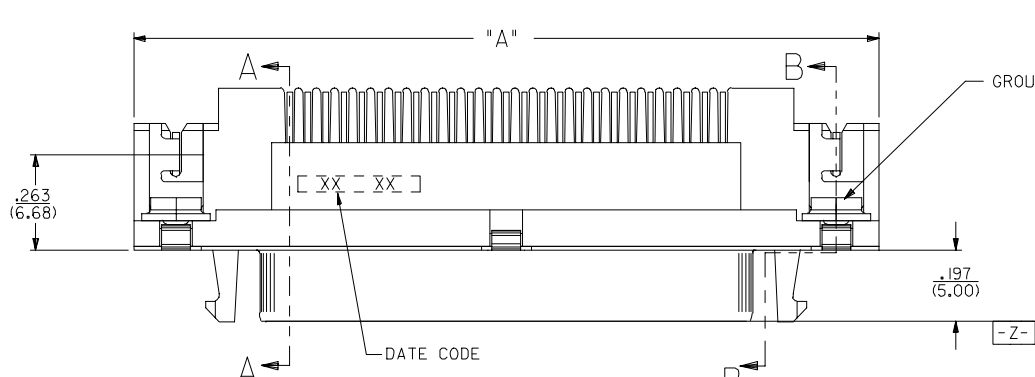


13 12 11 10 9 8 7 6 5 4 3 2 1

J  
I  
H  
G  
F  
E  
D  
C  
B  
A

J  
I  
H  
G  
F  
E  
D  
C  
B  
A



- NOTES:**
- SEE SHEET 4 & 5 FOR CHARTED DIMENSIONS AND PART NUMBERS.
  - FOR FIXED TAIL / PCB PATTERN AT LAST CIRCUIT POSITIONS REFER TO SECTION A-A ON SHEET 2 AND PCB LAYOUTS ON SHEET 3.
  - THIS DIMENSION TO MEET SPECIFICATIONS AFTER SHIELD IS FULLY SEATED TO HOUSING AS A RESULT OF A BRACKET OR PANEL.
  - REFER TO PS-79058 PRODUCT SPEC. FOR ELECTRICAL, MECHANICAL AND ENVIRONMENTAL SPECIFICATIONS.
  - MATERIAL:**  
RECEPTACLE HOUSING: GLASS FILLED LIQUID CRYSTAL POLYMER; COLOR-BLACK; UL 94V-0  
CONTACTS: PHOSPHOR BRONZE  
SHIELD: STEEL WITH BRIGHT NICKEL OVER COPPER FLASH (OPTIONAL)  
GROUNDING CLIP: BRASS WITH TIN OVER NICKEL PLATE
  - PACKAGING:**  
PARTS PACKAGED IN TUBES PER PK-70873-0207

|           |   |
|-----------|---|
| 5         | S |
| 4         | S |
| 3         | S |
| 2         | S |
| 1         | S |
| SHT. REV. |   |

**TERMINAL FINISH:**  
SELECTIVE GOLD: THICKNESS= 30 MICROINCHES/(0.76 MICROMETERS) MINIMUM.  
SELECTIVE TIN: THICKNESS= 75 MICROINCHES/(1.90 MICROMETERS) MINIMUM.  
NICKEL UNDERPLATE OVERALL.

**NOTE FOR LEAD FREE CONVERSION:**  
THE PRIMARY SHIPPING CARTON WILL BE LABELED "COMPLIANT TO ROHS DIRECTIVE 2002/95/EC AND ELV ANNEX II OF DIRECTIVE 2000/53/EC". CARTONS WITHOUT THIS LABEL MAY CONTAIN PRODUCT WITH LEAD.

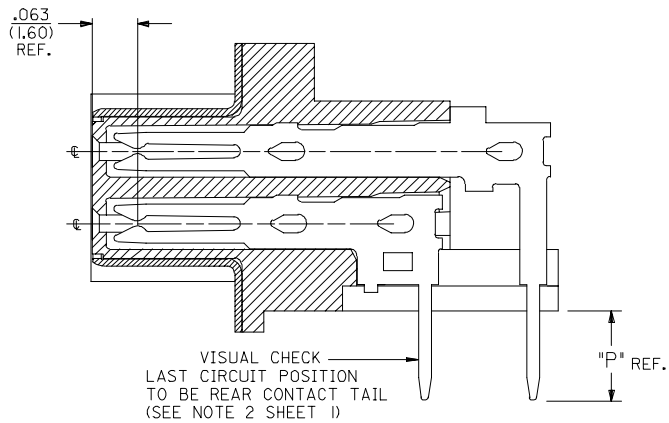
|                         |                     |                     |            |            |
|-------------------------|---------------------|---------------------|------------|------------|
| <b>UPDATE REV LEVEL</b> | FC NO: UCP2005-1072 | 2005/03/11          | 2005/03/14 | 2005/03/28 |
| <b>DRWNSMART</b>        | <b>CHKD:BBARKER</b> | <b>APPR:SMILLER</b> |            |            |
| <b>REV</b>              | <b>DESCRIPTION</b>  |                     |            |            |

|  |         |
|--|---------|
| <b>QUALITY SYMBOLS</b>                       |         |
| <b>GENERAL TOLERANCES (UNLESS SPECIFIED)</b> | mm INCH |
| 4 PLACES ± --- ± ---                         | ± .005  |
| 3 PLACES ± --- ± ---                         | ± .013  |
| 2 PLACES ± --- ± ---                         | ± ---   |
| 1 PLACE ± --- ± ---                          | ± ---   |
| ANGULAR                                      | ±1/2°   |

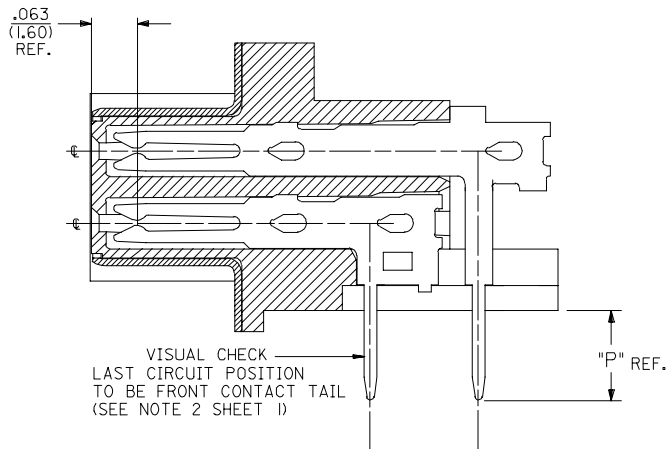
|                               |            |
|-------------------------------|------------|
| <b>DIMENSION STYLE</b>        | IN/MM      |
| <b>SCALE</b>                  | 4:1        |
| <b>DESIGN UNITS</b>           | INCH       |
| <b>THIRD ANGLE PROJECTION</b> |            |
| <b>DRAWN BY</b>               | JLONG      |
| <b>DATE</b>                   | 03/27/1989 |
| <b>CHECKED BY</b>             | BOWEN      |
| <b>DATE</b>                   | 03/27/1989 |
| <b>APPROVED BY</b>            | DJB        |
| <b>DATE</b>                   | 03/27/1989 |

|  |                     |
|--|---------------------|
| <b>SCSI SHIELDED RECEPTACLE ASSEMBLY WITH LATCHES</b>  |                     |
| <b>MOLEX INCORPORATED</b>  |                     |
| <b>MATERIAL NO.</b>  | <b>DOCUMENT NO.</b> |
| SEE TABLE  | SDA-79059-2***      |
| <b>SHEET NO.</b>   | 1 OF 5              |
| <b>THIS DRAWING CONTAINS INFORMATION THAT IS PROPRIETARY TO MOLEX INCORPORATED AND SHOULD NOT BE USED WITHOUT WRITTEN PERMISSION</b> |                     |

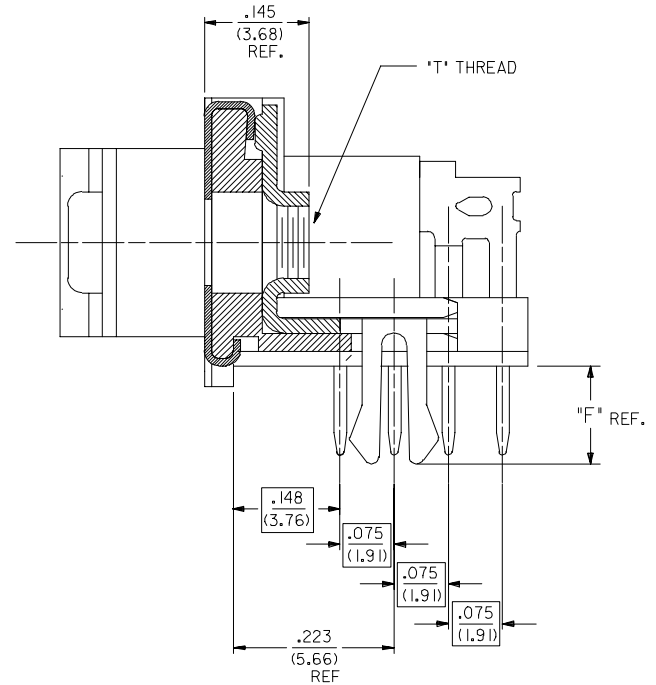
12 11 10 9 8 7 6 5 4 3 2 1



SECTION A-A  
68 CIRCUIT TYPE II TAIL VERSION  
50 CIRCUIT



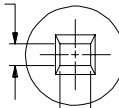
SECTION A-A  
68 CIRCUIT TYPE I TAIL VERSION ONLY



SECTION B-B

$\varnothing .006 / (.015) \text{ M } Z X Y$

$.024 \pm .002$   
(0,61 ± 0,05)

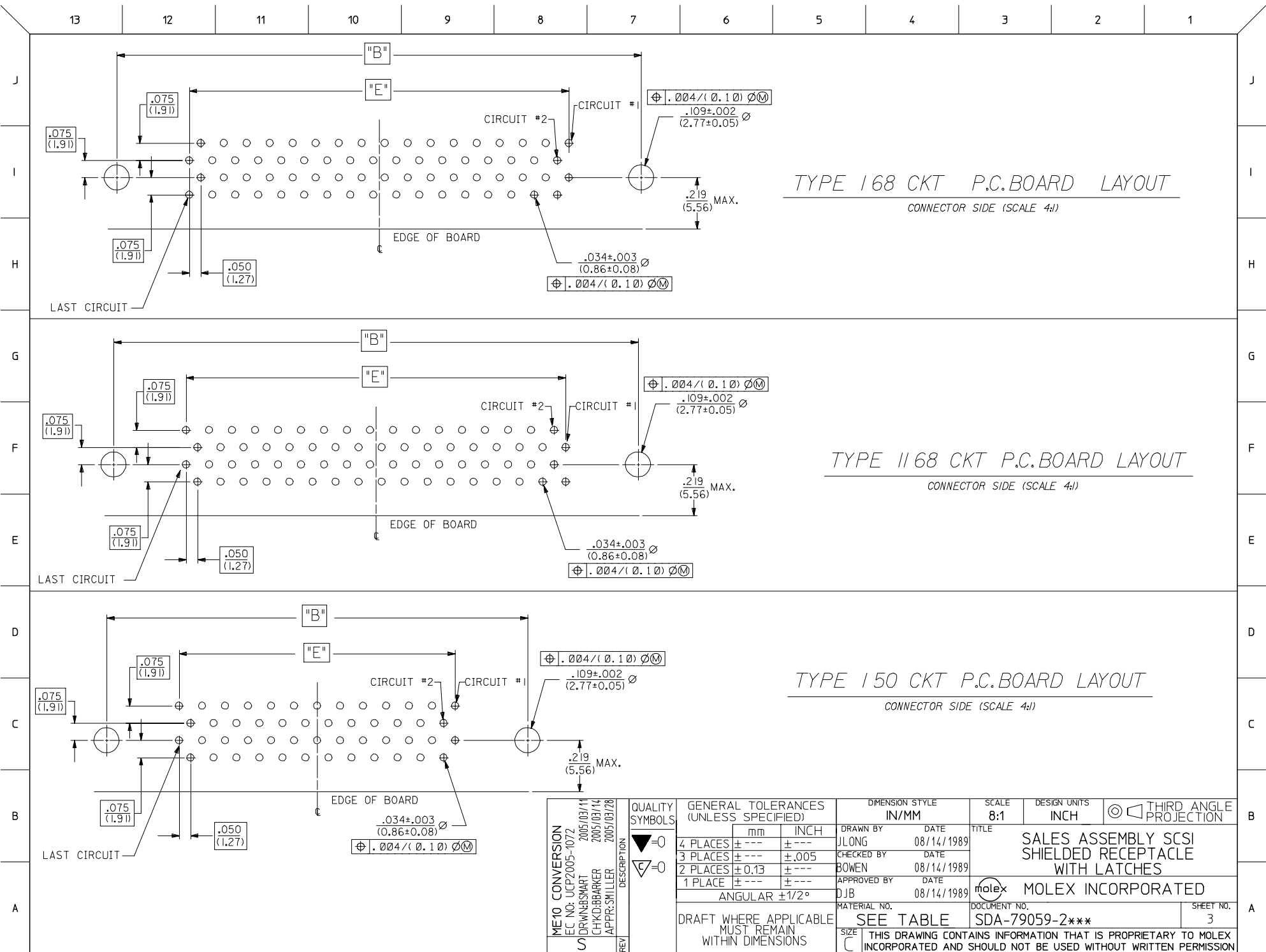


$\varnothing .006 / (.015) \text{ M } Z Y X$

$.034 \pm .003$   
(0,86 ± 0,08)

PIN WINDOW DETAIL  
SCALE 10:1

|  |  |  |   |                          |  |                        |
|--|--|--|---|--------------------------|--|------------------------|
| CHG TYPE I & II DESC<br>EC NO: UCP2005-1072<br>5) DRW:BSMART 2005/03/11<br>CHK:DIBARKER 2005/03/14<br>APPR:SMILLER 2005/03/28<br>REV DESCRIPTION | QUALITY SYMBOLS                                      | GENERAL TOLERANCES (UNLESS SPECIFIED)  | DIMENSION STYLE IN/MM   | SCALE 8:1                | DESIGN UNITS INCH                                    | THIRD ANGLE PROJECTION |
|  | ▽=0<br>▽=0   | mm INCH<br>4 PLACES ± --- ± ---<br>3 PLACES ± --- ± .005<br>2 PLACES ± 0.13 ± ---<br>1 PLACE ± --- ± ---<br>ANGULAR ±1/2°                                      | DRAWN BY JLONG DATE 04/14/1989<br>CHECKED BY BOWEN DATE 04/14/1989<br>APPROVED BY DJB DATE 04/14/1989 | TITLE                    | SALES ASSEMBLY SCSI SHIELDED RECEPTACLE WITH LATCHES |                        |
|  | DRAFT WHERE APPLICABLE MUST REMAIN WITHIN DIMENSIONS | MATERIAL NO. SEE TABLE<br>SIZE C THIS DRAWING CONTAINS INFORMATION THAT IS PROPRIETARY TO MOLEX INCORPORATED AND SHOULD NOT BE USED WITHOUT WRITTEN PERMISSION | DOCUMENT NO. SDA-79059-2***<br>SHEET NO. 2  | MOLEX MOLEX INCORPORATED |  |                        |
|  |  |  |   |                          |  |                        |



TYPE 168 CKT P.C.BOARD LAYOUT  
CONNECTOR SIDE (SCALE 4:1)

TYPE 1168 CKT P.C.BOARD LAYOUT  
CONNECTOR SIDE (SCALE 4:1)

TYPE 150 CKT P.C.BOARD LAYOUT  
CONNECTOR SIDE (SCALE 4:1)

|   |                               |                                       |                          |   |                      |   |
|---|-------------------------------|---------------------------------------|--------------------------|---|----------------------|---|
| ME10 CONVERSION<br>FC NO: UCP2005-1072<br>2005/03/14<br>DRAWN BY: CHIKIDBARKER<br>2005/03/14<br>APPR: SMILLER<br>2005/03/28 | QUALITY SYMBOLS<br>▽=0<br>▽=0 | GENERAL TOLERANCES (UNLESS SPECIFIED) | DIMENSION STYLE<br>IN/MM | SCALE<br>8:1  | DESIGN UNITS<br>INCH | THIRD ANGLE PROJECTION  |
| REV   | DESCRIPTION                   | mm                                    | INCH                     | DRAWN BY<br>JLONG   | DATE<br>08/14/1989   | TITLE<br>SALES ASSEMBLY SCSI SHIELDED RECEPTACLE WITH LATCHES |
|   |                               | 4 PLACES ± ---                        | ± ---                    | CHECKED BY<br>BOWEN   | DATE<br>08/14/1989   | MOLEX INCORPORATED  |
|   |                               | 3 PLACES ± ---                        | ± .005                   | APPROVED BY<br>DJB  | DATE<br>08/14/1989   |   |
|   |                               | 2 PLACES ± 0.13                       | ± ---                    | MATERIAL NO.  | DOCUMENT NO.         | SHEET NO.<br>3  |
|   |                               | 1 PLACE ± ---                         | ± ---                    | SEE TABLE   |                      | SDA-79059-2***  |
|   |                               | ANGULAR ±1/2°                         |                          | THIS DRAWING CONTAINS INFORMATION THAT IS PROPRIETARY TO MOLEX INCORPORATED AND SHOULD NOT BE USED WITHOUT WRITTEN PERMISSION |                      |   |

TYPE II TAIL PATTERN

ASSEMBLIES WITH .078 DIAMETER END HOLES IN HOUSING AND #2-56 GND CLIPS

| EDP/ITEM NUMBER | CKT. SIZE | HOUSING HOLE DIA. | DIM. T GND CLIP THREAD | DIM. A |       | DIM. B |       | DIM. C |       | DIM. D |       | DIM. E |       | DIM. F |      | DIM. P |      | RECMD PCB |      |
|-----------------|-----------|-------------------|------------------------|--------|-------|--------|-------|--------|-------|--------|-------|--------|-------|--------|------|--------|------|-----------|------|
|                 |           |                   |                        | INCH   | MM    | INCH   | MM    | INCH   | MM    | INCH   | MM    | INCH   | MM    | INCH   | MM   | INCH   | MM   | INCH      | MM   |
| 015-87-6023     | 68        | .078              | 2-56                   | 2.515  | 63.88 | 2.280  | 57.91 | 1.816  | 46.13 | 2.115  | 53.72 | 1.650  | 41.91 | .105   | 2.67 | .125   | 3.18 | .062      | 1.57 |
| 015-87-6024     | 68        | .078              | 2-56                   | 2.515  | 63.88 | 2.280  | 57.91 | 1.816  | 46.13 | 2.115  | 53.72 | 1.650  | 41.91 | .136   | 3.45 | .125   | 3.18 | .093      | 2.36 |

ASSEMBLIES WITH .105 DIAMETER END HOLES IN HOUSING AND #4-40 AND CUSTOM GND CLIPS

|             |    |      |      |       |       |       |       |       |       |       |       |       |       |      |      |      |      |      |      |
|-------------|----|------|------|-------|-------|-------|-------|-------|-------|-------|-------|-------|-------|------|------|------|------|------|------|
| 015-87-6020 | 68 | .105 | 4-40 | 2.515 | 63.88 | 2.280 | 57.91 | 1.816 | 46.13 | 2.115 | 53.72 | 1.650 | 41.91 | .105 | 2.67 | .125 | 3.18 | .062 | 1.57 |
| 015-87-6021 | 68 | .105 | 4-40 | 2.515 | 63.88 | 2.280 | 57.91 | 1.816 | 46.13 | 2.115 | 53.72 | 1.650 | 41.91 | .136 | 3.45 | .125 | 3.18 | .093 | 2.36 |

TYPE I TAIL PATTERN

ASSEMBLIES WITH .078 DIAMETER END HOLES IN HOUSING AND #2-56 GND CLIPS

| EDP/ITEM NUMBER | CKT. SIZE | HOUSING HOLE DIA. | DIM. T GND CLIP THREAD | DIM. A |       | DIM. B |       | DIM. C |       | DIM. D |       | DIM. E |       | DIM. F |      | DIM. P |      | RECMD PCB |      |
|-----------------|-----------|-------------------|------------------------|--------|-------|--------|-------|--------|-------|--------|-------|--------|-------|--------|------|--------|------|-----------|------|
|                 |           |                   |                        | INCH   | MM    | INCH   | MM    | INCH   | MM    | INCH   | MM    | INCH   | MM    | INCH   | MM   | INCH   | MM   | INCH      | MM   |
| 79059-2900      | 68        | .078              | 2-56                   | 2.515  | 63.88 | 2.280  | 57.91 | 1.816  | 46.13 | 2.115  | 53.72 | 1.650  | 41.91 | .105   | 2.67 | .125   | 3.18 | .062      | 1.57 |
| 015-87-6011     | 50        | .078              | 2-56                   | 2.065  | 52.54 | 1.830  | 46.48 | 1.366  | 34.69 | 1.665  | 42.29 | 1.200  | 30.48 | .136   | 3.45 | .125   | 3.18 | .093      | 2.36 |
| 015-87-6010     | 50        | .078              | 2-56                   | 2.065  | 52.54 | 1.830  | 46.48 | 1.366  | 34.69 | 1.665  | 42.29 | 1.200  | 30.48 | .105   | 2.67 | .125   | 3.18 | .062      | 1.57 |

ASSEMBLIES WITH .105 DIAMETER END HOLES IN HOUSING AND #4-40 AND CUSTOM GND CLIPS

|             |    |      |      |       |       |       |       |       |       |       |       |       |       |      |      |      |      |      |      |
|-------------|----|------|------|-------|-------|-------|-------|-------|-------|-------|-------|-------|-------|------|------|------|------|------|------|
| 015-87-6051 | 50 | .105 | 4-40 | 2.065 | 52.54 | 1.830 | 46.48 | 1.366 | 34.69 | 1.665 | 42.29 | 1.200 | 30.48 | .136 | 3.45 | .125 | 3.18 | .093 | 2.36 |
| 015-87-6050 | 50 | .105 | 4-40 | 2.065 | 52.54 | 1.830 | 46.48 | 1.366 | 34.69 | 1.665 | 42.29 | 1.200 | 30.48 | .105 | 2.67 | .125 | 3.18 | .062 | 1.57 |

NOTE: ASSEMBLIES LISTED ON THIS SHEET HAVE A SMALLER HOLE DIAMETER FOR INSERTION OF SCREWLOCKS USING A POWER DRIVER.

|  |   |  |  |   |                   |                        |
|--|---|--|--|---|-------------------|------------------------|
| CHG TYPE I & II DESC<br>EC NO: UCP2005-1072<br>05/03/11<br>DRW:BSMART<br>CHK:DBARKER<br>2005/03/14<br>APPR:SMILLER<br>2005/03/28 | QUALITY SYMBOLS   | GENERAL TOLERANCES (UNLESS SPECIFIED)  | DIMENSION STYLE IN/MM  | SCALE ---   | DESIGN UNITS INCH | THIRD ANGLE PROJECTION |
|  | ▽=0<br>▽=0  | 4 PLACES ± --- ± ---<br>3 PLACES ± --- ± ---<br>2 PLACES ± --- ± ---<br>1 PLACE ± --- ± ---<br>ANGULAR ±1/2° | DRAWN BY DATE<br>DCB 08/15/1991<br>CHECKED BY DATE<br>CAB 08/15/1991<br>APPROVED BY DATE<br>CAB 08/15/1991 | TITLE<br>SALES ASSEMBLY SCSI SHIELDED RECEPTACLE WITH LATCHES |                   |                        |
|  | DRAFT WHERE APPLICABLE MUST REMAIN WITHIN DIMENSIONS  | MATERIAL NO.<br>SEE TABLE  | DOCUMENT NO.<br>SDA-79059-2***   | SHEET NO.<br>4  |                   |                        |
|  | THIS DRAWING CONTAINS INFORMATION THAT IS PROPRIETARY TO MOLEX INCORPORATED AND SHOULD NOT BE USED WITHOUT WRITTEN PERMISSION |  |  |   |                   |                        |

TYPE II TAIL PATTERN

ASSEMBLIES WITH .120 DIAMETER END HOLES IN HOUSING AND #4-40 GND CLIPS

| EDP/ITEM NUMBER | CKT. SIZE | HOUSING HOLE DIA. | DIM. T GND CLIP THREAD | DIM. A |       | DIM. B |       | DIM. C |       | DIM. D |       | DIM. E |       | DIM. F |      | DIM. P |      | REC'D PCB |      |
|-----------------|-----------|-------------------|------------------------|--------|-------|--------|-------|--------|-------|--------|-------|--------|-------|--------|------|--------|------|-----------|------|
|                 |           |                   |                        | INCH   | MM    | INCH   | MM    | INCH   | MM    | INCH   | MM    | INCH   | MM    | INCH   | MM   | INCH   | MM   | INCH      | MM   |
| 79059-2702      | 68        | .120              | 4-40                   | 2.515  | 63.88 | 2.280  | 57.91 | 1.816  | 46.13 | 2.115  | 53.72 | 1.650  | 41.91 | .105   | 2.67 | .125   | 3.18 | .062      | 1.57 |
| 79059-2708      | 68        | .120              | 4-40                   | 2.515  | 63.88 | 2.280  | 57.91 | 1.816  | 46.13 | 2.115  | 53.72 | 1.650  | 41.91 | .136   | 3.45 | .125   | 3.18 | .093      | 2.36 |

ASSEMBLIES WITH .120 DIAMETER END HOLES IN HOUSING AND #2-56 AND CUSTOM GND CLIPS

|            |    |      |      |       |       |       |       |       |       |       |       |       |       |      |      |      |      |      |      |
|------------|----|------|------|-------|-------|-------|-------|-------|-------|-------|-------|-------|-------|------|------|------|------|------|------|
| 79059-2721 | 68 | .120 | 2-56 | 2.515 | 63.88 | 2.280 | 57.91 | 1.816 | 46.13 | 2.115 | 53.72 | 1.650 | 41.91 | .105 | 2.67 | .125 | 3.18 | .062 | 1.57 |
| 79059-2727 | 68 | .120 | 2-56 | 2.515 | 63.88 | 2.280 | 57.91 | 1.816 | 46.13 | 2.115 | 53.72 | 1.650 | 41.91 | .136 | 3.45 | .125 | 3.18 | .093 | 2.36 |

TYPE I TAIL PATTERN

ASSEMBLIES WITH .120 DIAMETER END HOLES IN HOUSING AND #4-40 GND CLIPS

| EDP/ITEM NUMBER | CKT. SIZE | HOUSING HOLE DIA. | DIM. T GND CLIP THREAD | DIM. A |       | DIM. B |       | DIM. C |       | DIM. D |       | DIM. E |       | DIM. F |      | DIM. P |      | REC'D PCB |      |
|-----------------|-----------|-------------------|------------------------|--------|-------|--------|-------|--------|-------|--------|-------|--------|-------|--------|------|--------|------|-----------|------|
|                 |           |                   |                        | INCH   | MM    | INCH   | MM    | INCH   | MM    | INCH   | MM    | INCH   | MM    | INCH   | MM   | INCH   | MM   | INCH      | MM   |
| 79059-2701      | 50        | .120              | 4-40                   | 2.065  | 52.54 | 1.830  | 46.48 | 1.366  | 34.69 | 1.665  | 42.29 | 1.200  | 30.48 | .105   | 2.67 | .125   | 3.18 | .062      | 1.57 |
| 79059-2707      | 50        | .120              | 4-40                   | 2.065  | 52.54 | 1.830  | 46.48 | 1.366  | 34.69 | 1.665  | 42.29 | 1.200  | 30.48 | .136   | 3.45 | .125   | 3.18 | .093      | 2.36 |

ASSEMBLIES WITH .120 DIAMETER END HOLES IN HOUSING AND #2-56 AND CUSTOM GND CLIPS

|            |    |      |      |       |       |       |       |       |       |       |       |       |       |      |      |      |      |      |      |
|------------|----|------|------|-------|-------|-------|-------|-------|-------|-------|-------|-------|-------|------|------|------|------|------|------|
| 79059-2720 | 50 | .120 | 2-56 | 2.065 | 52.54 | 1.830 | 46.48 | 1.366 | 34.69 | 1.665 | 42.29 | 1.200 | 30.48 | .105 | 2.67 | .125 | 3.18 | .062 | 1.57 |
| 79059-2726 | 50 | .120 | 2-56 | 2.065 | 52.54 | 1.830 | 46.48 | 1.366 | 34.69 | 1.665 | 42.29 | 1.200 | 30.48 | .136 | 3.45 | .125 | 3.18 | .093 | 2.36 |

NOTE: ASSEMBLIES LISTED ON THIS SHEET HAVE A LARGER HOLE DIAMETER FOR INSERTION OF SCREWLOCKS USING A MANUAL DRIVER.

|   |                     |   |                      |                          |                                |               |                      |                        |   |  |
|---|---------------------|---|----------------------|--------------------------|--------------------------------|---------------|----------------------|------------------------|---|--|
| CHG TYPE I TO II<br>EC NO: UCP2005-1072<br>2005/03/11<br>DRW:BSWART<br>CHK:D.BARKER<br>2005/03/14<br>APPR:SMILLER<br>2005/03/28 | QUALITY SYMBOLS<br> | GENERAL TOLERANCES (UNLESS SPECIFIED)   |                      | DIMENSION STYLE<br>IN/MM |                                | SCALE<br>---  | DESIGN UNITS<br>INCH | THIRD ANGLE PROJECTION |   |  |
|   |                     | 4 PLACES ± --- ± ---  | 3 PLACES ± --- ± --- | 2 PLACES ± --- ± ---     | 1 PLACE ± --- ± ---            | ANGULAR ±1/2° | DRAWN BY<br>JLONG    | DATE<br>01/28/1997     | TITLE<br>SALES ASSEMBLY SCSI SHIELDED RECEPTACLE WITH LATCHES |  |
|   |                     | DRAFT WHERE APPLICABLE MUST REMAIN WITHIN DIMENSIONS  |                      | SEE TABLE                | MATERIAL NO.<br>SDA-79059-2*** |               | APPROVED BY<br>DJB   | DATE<br>01/28/1997     | MOLEX INCORPORATED  |  |
|   |                     | THIS DRAWING CONTAINS INFORMATION THAT IS PROPRIETARY TO MOLEX INCORPORATED AND SHOULD NOT BE USED WITHOUT WRITTEN PERMISSION |                      | SHEET NO.<br>5           |                                |               |                      |                        |   |  |