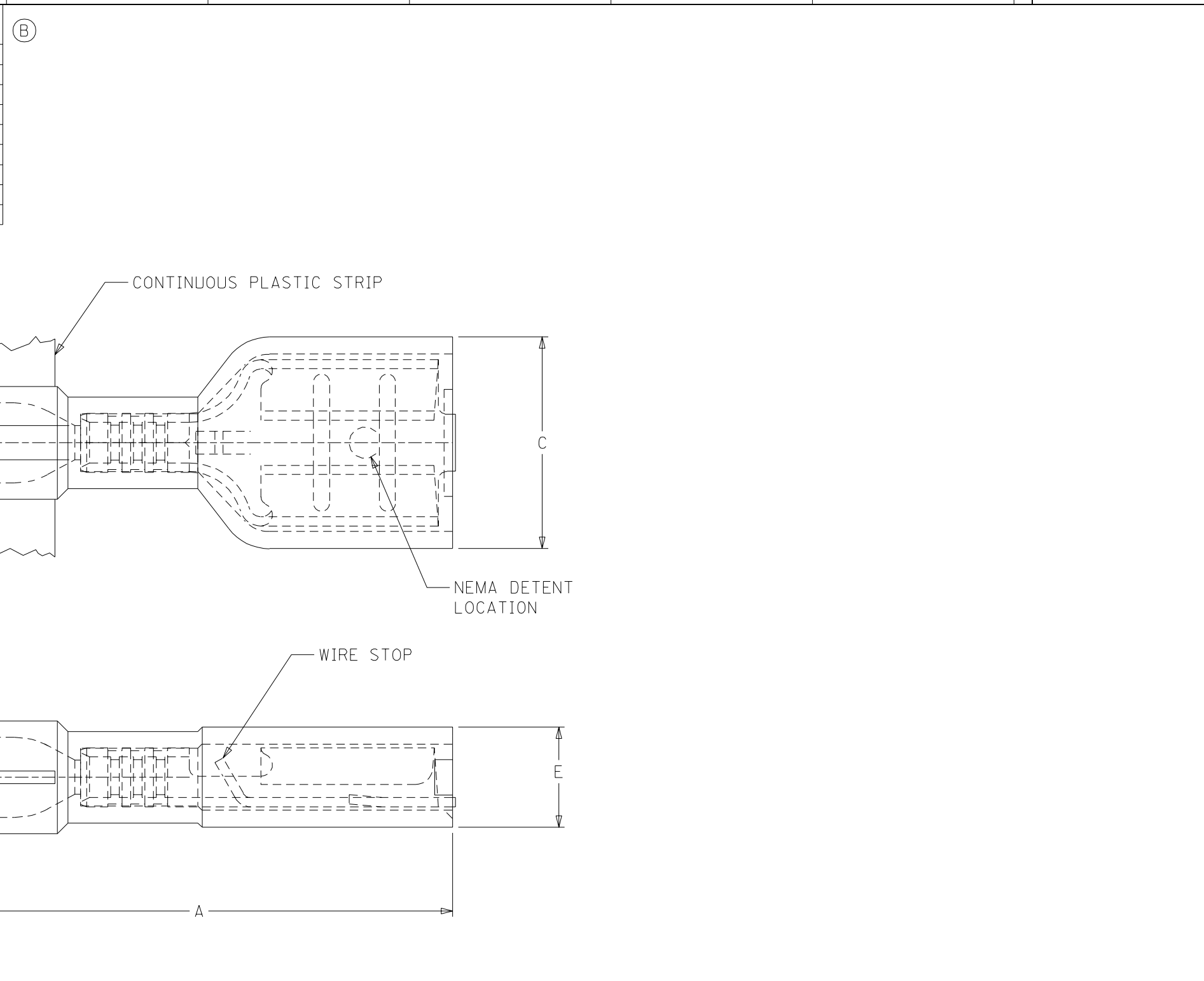


MATERIAL NUMBER	ENGINEERING NUMBER	FITS MALE TAB SIZE	"A" MAX.	"C" MAX.	"E" MAX.	CARRIER CONFIGURATION
190030132	BB-2207V	.187X.020	.78/19.8	.316/8.03	.170/4.32	LOOSE PIECE
190030133	BB-2207VT	.187X.020	.78/19.8	.316/8.03	.170/4.32	TAPE MOUNT
190030134	BB-2207VC	.187X.020	.78/19.8	.316/8.03	.170/4.32	PLASTIC STRIP
190030135	BB-2208V	.187X.032	.78/19.8	.316/8.03	.170/4.32	LOOSE PIECE
190030136	BB-2208VT	.187X.032	.78/19.8	.316/8.03	.170/4.32	TAPE MOUNT
190030137	BB-2208VC	.187X.032	.78/19.8	.316/8.03	.170/4.32	PLASTIC STRIP
190030044	BB-2206VB	.250X.032	.86/21.8	.380/9.65	.180/4.57	LOOSE PIECE
190030080	BB-2206VBT	.250X.032	.86/21.8	.380/9.65	.180/4.57	TAPE MOUNT
190030045	BB-2206VBC	.250X.032	.86/21.8	.380/9.65	.180/4.57	PLASTIC STRIP



SALES DRAWING

NOTES:  
 (B) 1. MATERIAL: TERMINAL: BRASS .016/0.41  
 PLATING: ELECTRO-TIN  
 INSULATION: NYLON 6/6 94V-0 RATING  
 COLOR: BLUE.  
 2. MWID = MAXIMUM WIRE INSULATION DIAMETER  
 3. ALL DIMENSIONS = INCHES/MM

REV'D NYLON COLOR EC NO. ETC2004-0101 DRWN: BRE 03/11/21 CHK: HEB 03/11/21 APPR: RWD 03/11/21	QUALITY SYMBOLS MAJOR $\nabla=0$ CRITICAL $\nabla C=0$	GENERAL TOLERANCES: (UNLESS SPECIFIED)		SCALE NO: NE	DESIGN UNITS <input type="checkbox"/> mm <input checked="" type="checkbox"/> INCH	THIRD ANGLE PROJECTION	DIMENSIONS: <input type="checkbox"/> mm <input checked="" type="checkbox"/> INCH <input type="checkbox"/> mm ONLY	SHT	REV	
		4 PLACES $\pm 0.---$	$\pm .---$	DRAWN BY & DATE HEB 01/06/07		TITLE: FIQD FEMALE, INSULKRIMP 94V-0 MATERIAL 16-14 AWG				
		3 PLACES $\pm 0.---$	$\pm .005$	CHECKED BY & DATE RWD 01/06/07		MOLEX INCORPORATED				
		2 PLACES $\pm 0.13$	$\pm .01$	APPROVED BY & DATE RWD 01/06/07		CAD FILENAME S19003002.DGN	MATERIAL NO. SEE TABLE	DRAWING NO. SD-19003-002	SHEET NO. 1 OF 1	
1 PLACE $\pm 0.25$	$\pm .---$	ANGULAR: $\pm 1/2^\circ$		THIS DRAWING CONTAINS INFORMATION THAT IS PROPRIETARY TO MOLEX INCORPORATED AND SHOULD NOT BE USED WITHOUT WRITTEN PERMISSION.				SIZE B		
B	REV	DRAFT WHERE APPLICABLE MUST REMAIN WITHIN DIMENSIONS								