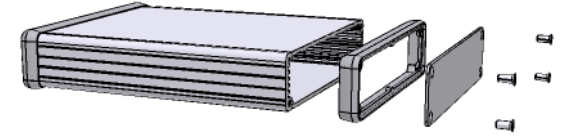
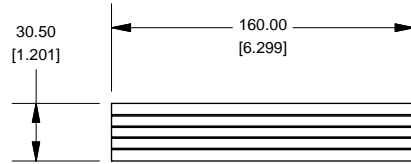
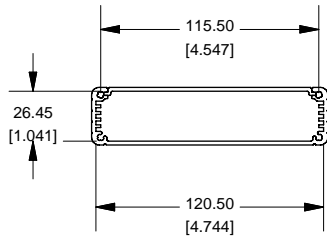
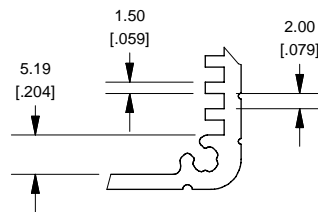


### Extrusion

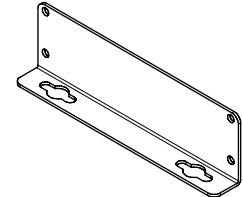
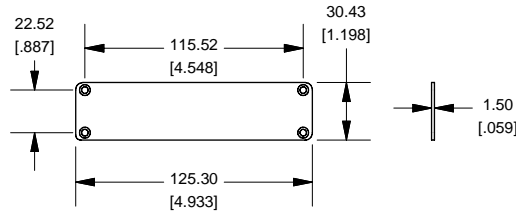


EXTRUSION DESIGNED FOR 120MM WIDE PC BOARD

### Slot Details

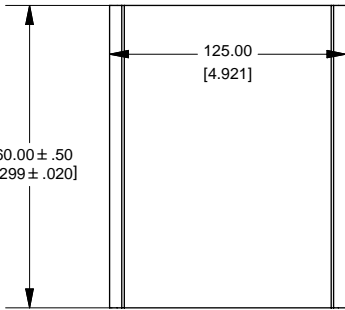


### End Plate

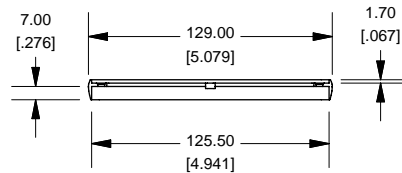
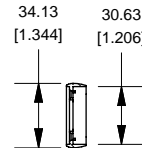
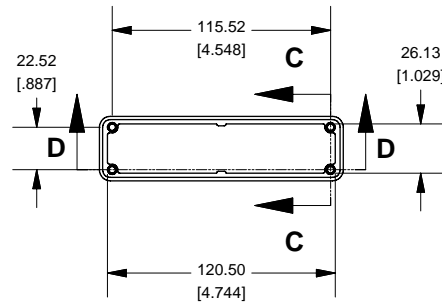


### OPTIONAL FLANGE END PANELS 1455PF

Enclosures can be Factory Modified ( Milling, Drilling, Printing etc. )  
 Solid models of this enclosure available in STEP or IGES.  
 Contact Factory [mjm@hammondmfg.com](mailto:mjm@hammondmfg.com)



### Open Bezel



NOTE	
Purchased assembly includes box, plastic bezels, end panels, #6 Taptight screws and self adhesive rubber feet.	
Box made from Extruded Aluminum 6063.	
Bezels made with polycarbonate.	

1455P1601	
PART NUMBERS	
Clear Anodized	1455P1601
Black Anodized	1455P1601BK
ACCESSORIES	
See website for accessories.	

**HAMMOND MANUFACTURING™**  
**1455P1601**  
[www.hammondmfg.com](http://www.hammondmfg.com)